

International Migration: Trends and Challenges

Kathleen Newland
Migration Policy Institute

OXFID

7 February, 2010

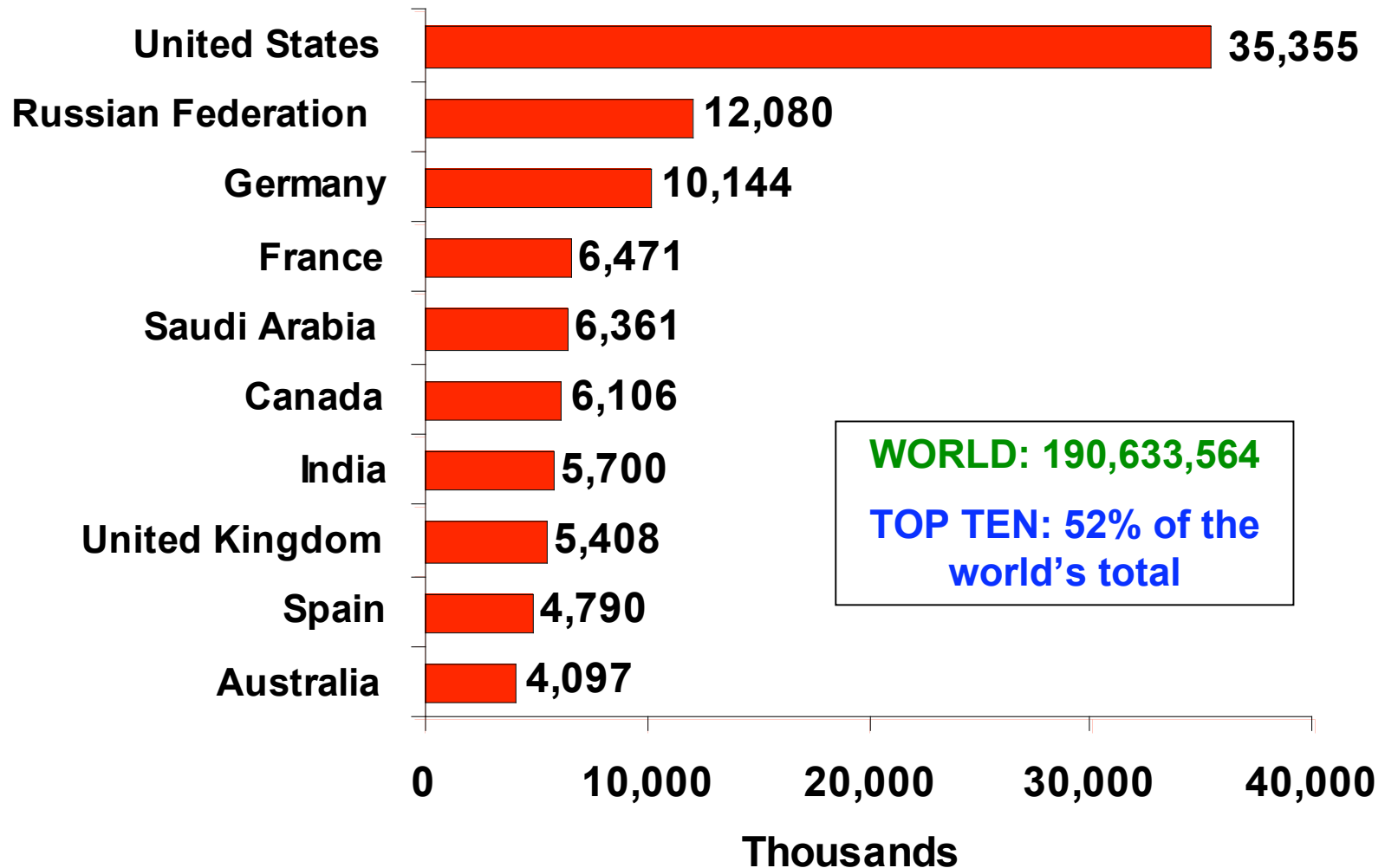
Immigrants by Geographic Area, 1990 and 2005

Geographic Area	Share of immigrants (%)	
	1990	2005
Europe*	32.0	34.0
Europe w/out Russia		22.0
Asia	32.0	28.0
North America	18.0	23.0
Africa	11.0	9.0
Latin America and the Caribbean	5.0	3.0
Oceania	3.0	3.0
World	100.0	100.0

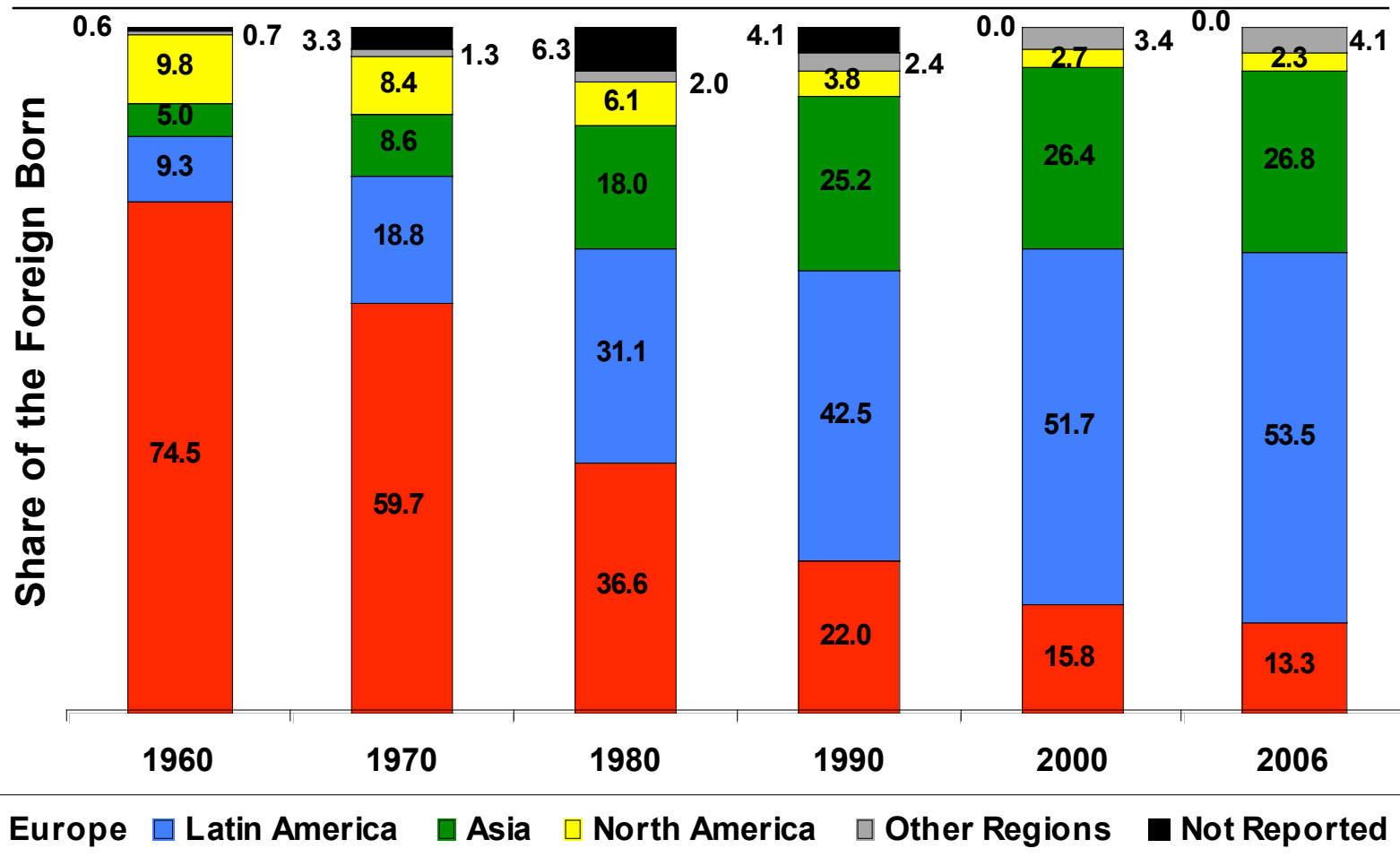
Note: Europe includes the Russian Federation.

Source: United Nations, *Trends in Total Migrant Stock: The 2005 Revision*, data in digital form, 2006.

Top Ten Countries with the Largest Number of International Migrants, 2005



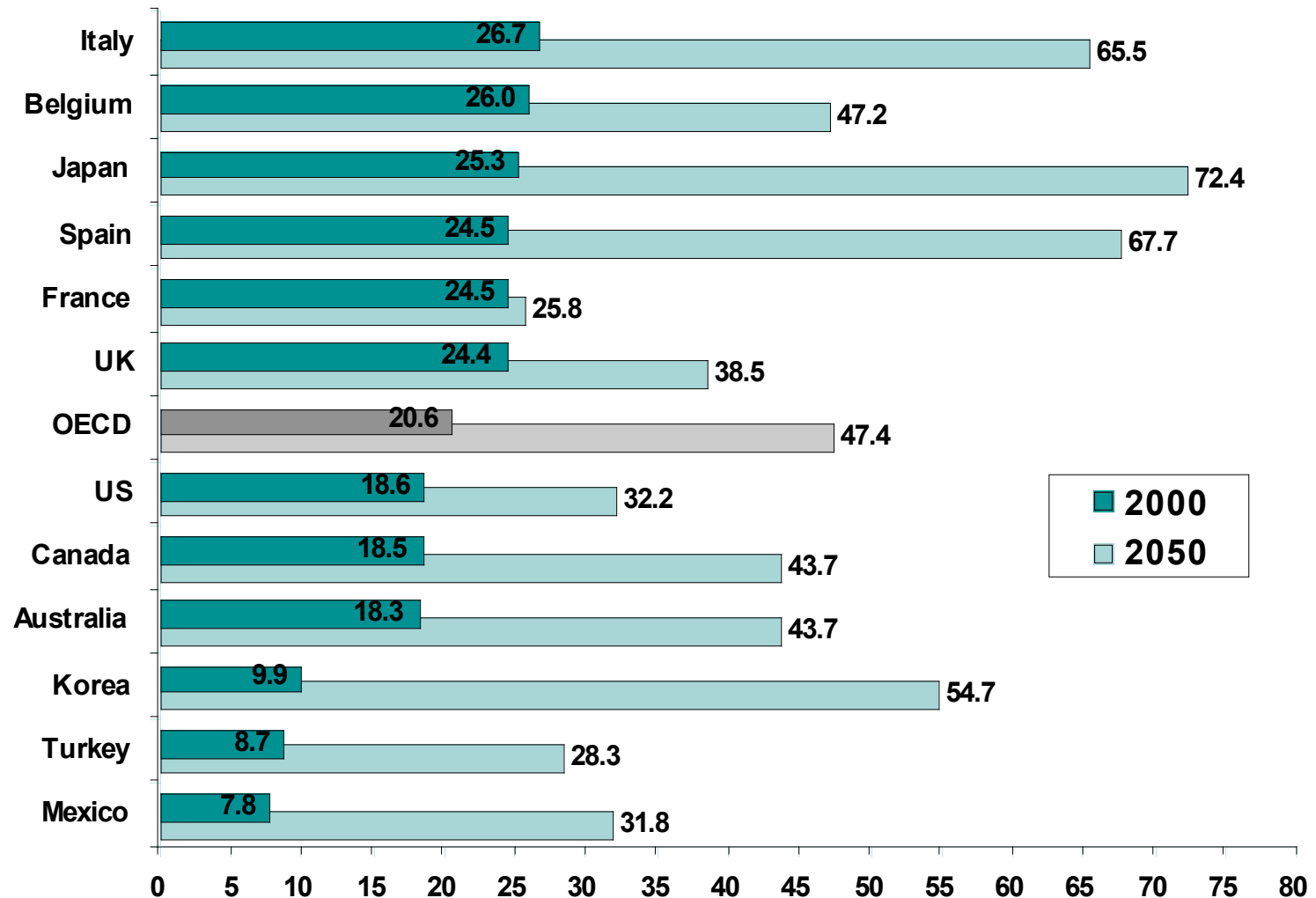
Foreign-born in the US by Region of Birth, 1960 to 2006



Source: 2006 American Community Survey, Census 2000 and Gibson, Campbell and Emily Lennon, US Census Bureau, Working Paper No. 29, *Historical Census Statistics on the Foreign-Born Population of the United States: 1850 to 1990*.

Notes: The "Other regions" category includes Africa and Oceania.

Old-age dependency ratios will more than double in the OECD by 2050



Source: OECD, 2005.

Immigrants in the labor force

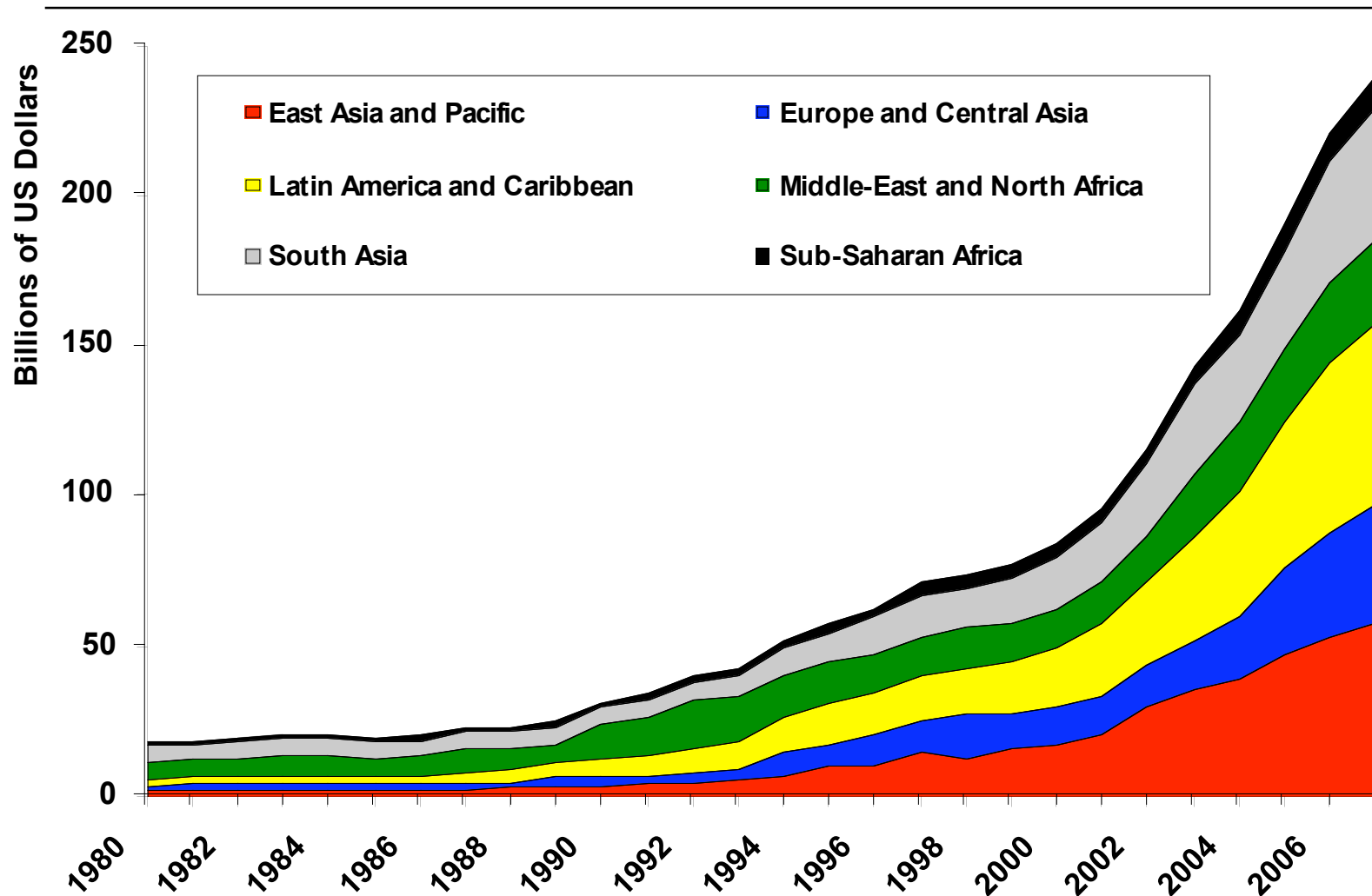
Immigrants are:

	Residents	Workers	Low-skill Workers	High-skill Workers
United States	12.0%	15.0%	21.0%	
UK	9.7%	9.6%	40.6%	34.8%
France	8.1%	10.6%	54.8%	18.1%
Germany	12.9%	15.9%	43.7%	15.5%
Spain	5.3%	9.8%	55.4%	21.8%
Ireland	11.0%	10.7%	29.5%	41.0%
Belgium	12.1%	10.9%	54.2%	21.6%
Netherlands	10.6%	11.1%	53.0%	17.6%
Switzerland	23.8%	24.3%	--	--

*

Source: Organization for Economic Cooperation and Development, Database on Foreign-born and Expatriates, 2005.

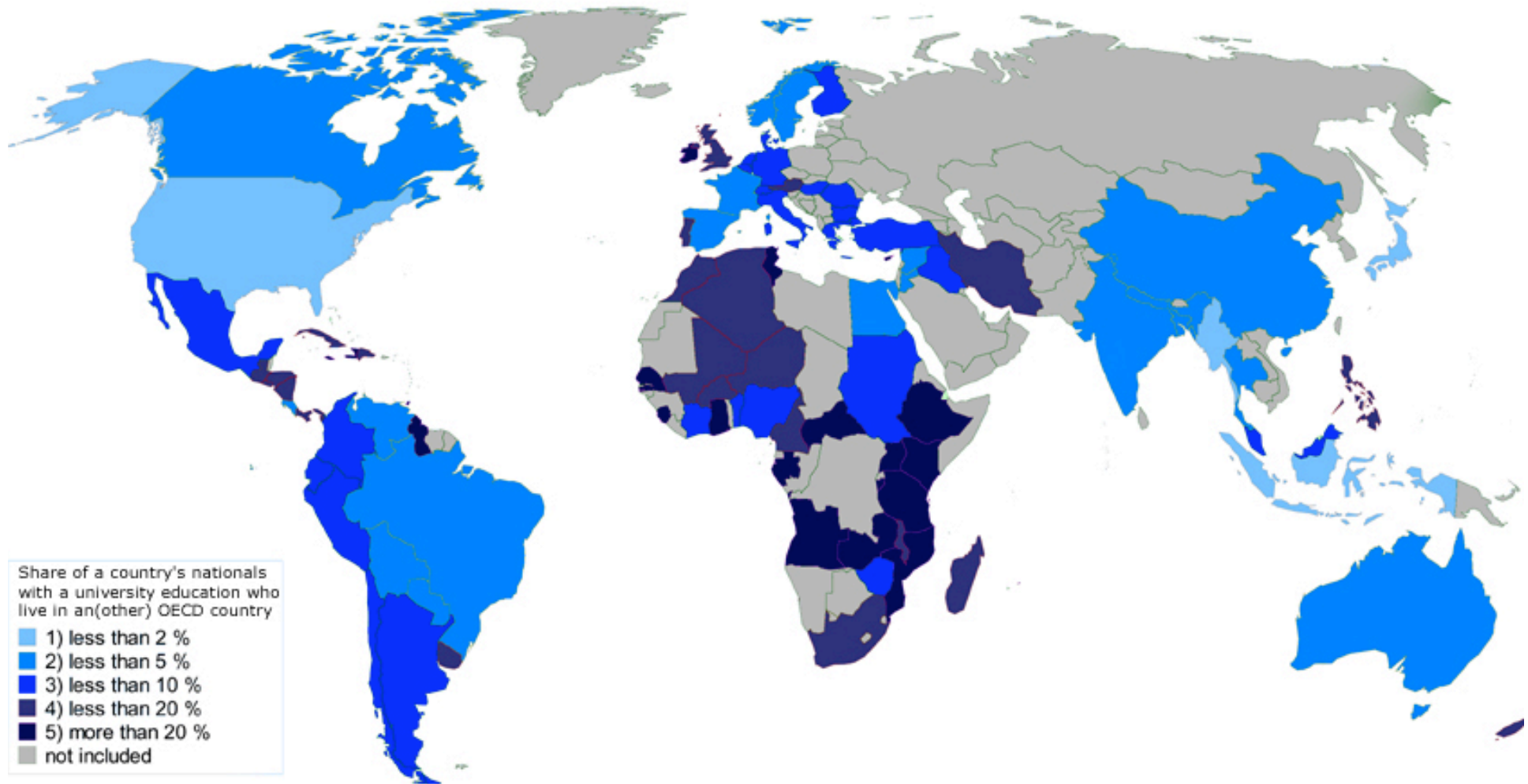
Global Remittance Flows by Region, 1980 to 2007



Note: Includes on formal remittance flows.

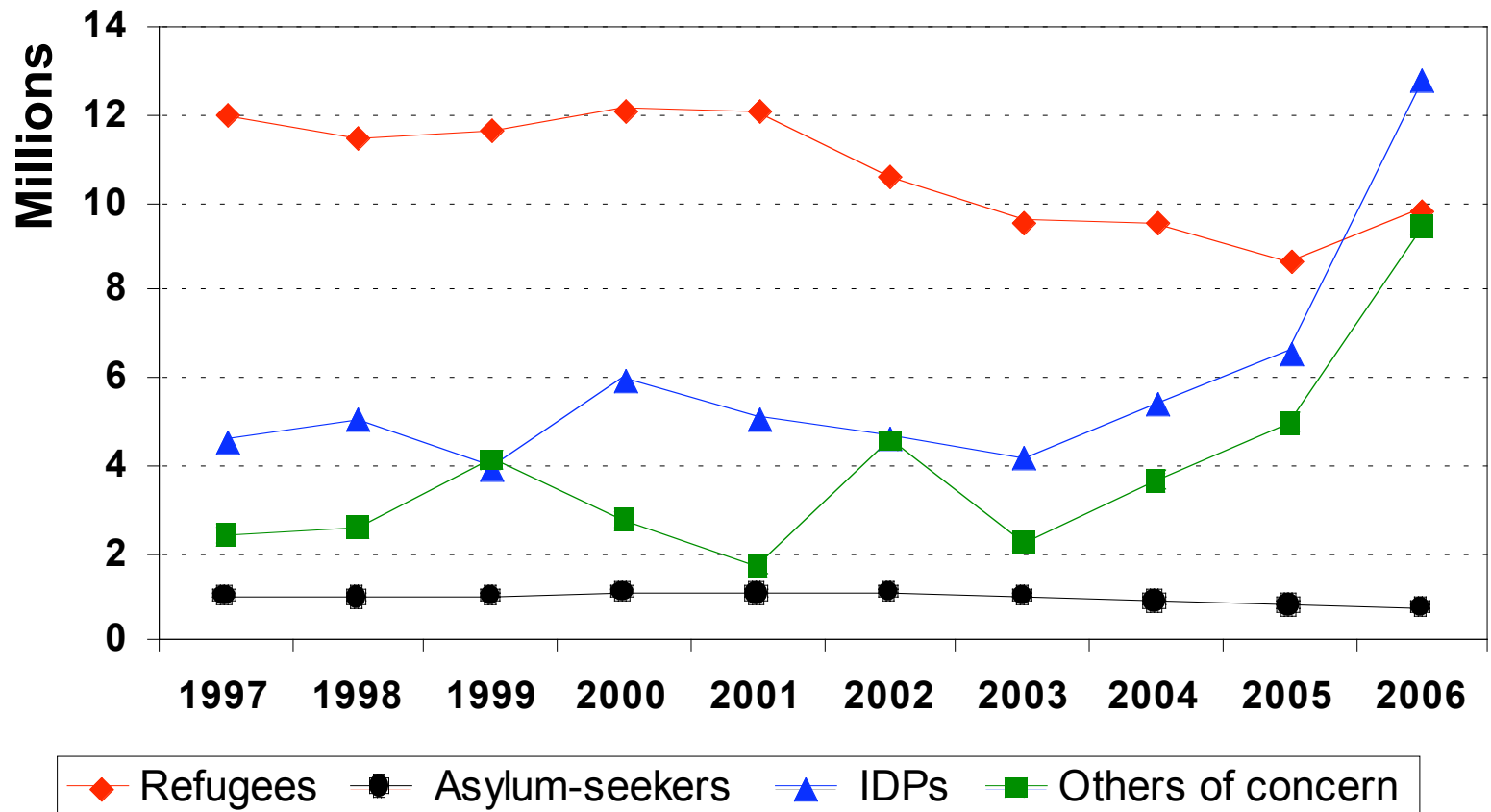
Source: Development Prospects Group, World Bank.

Brain Drain: The Global Picture



Source: Organization for Economic Cooperation and Development.

Refugees, Asylum Seekers, and IDPs, 1997 to 2006





Asylum Trends in Europe and North America

<u>Region</u>	From 2001-2006	From 2006-2007
EU-27	-54.7	+10.9
Europe	-53.9	+12.9
US/Canada	-49.8	+3.6

A Case of Document Fraud



For more information, contact

Kathleen Newland

Migration Policy Institute

1400 16th Street NW, Suite 300

Washington, DC 20036

(202) 266 1940

knewland@migrationpolicy.org